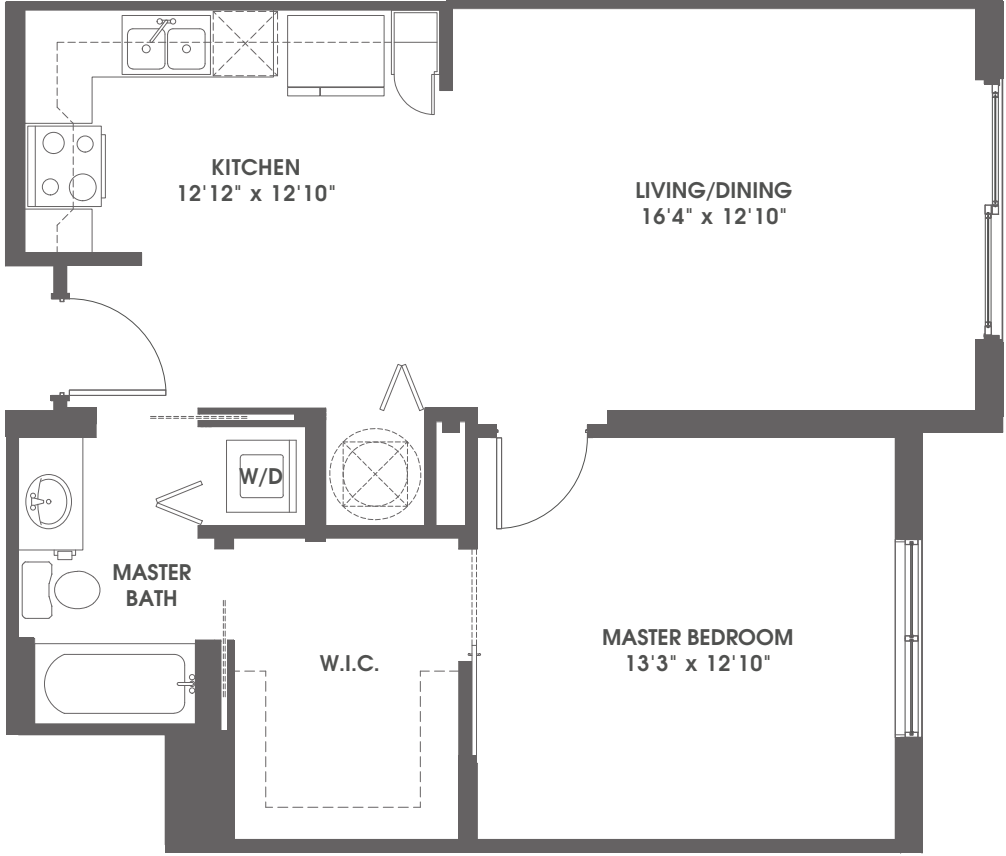


adrian 1 bedroom / 1 bath / 769 sq.ft.



Leasing Office: 896B N. Federal Highway | Pompano Beach, FL 33062 | 800.614.8106 | averypompanobeach.com

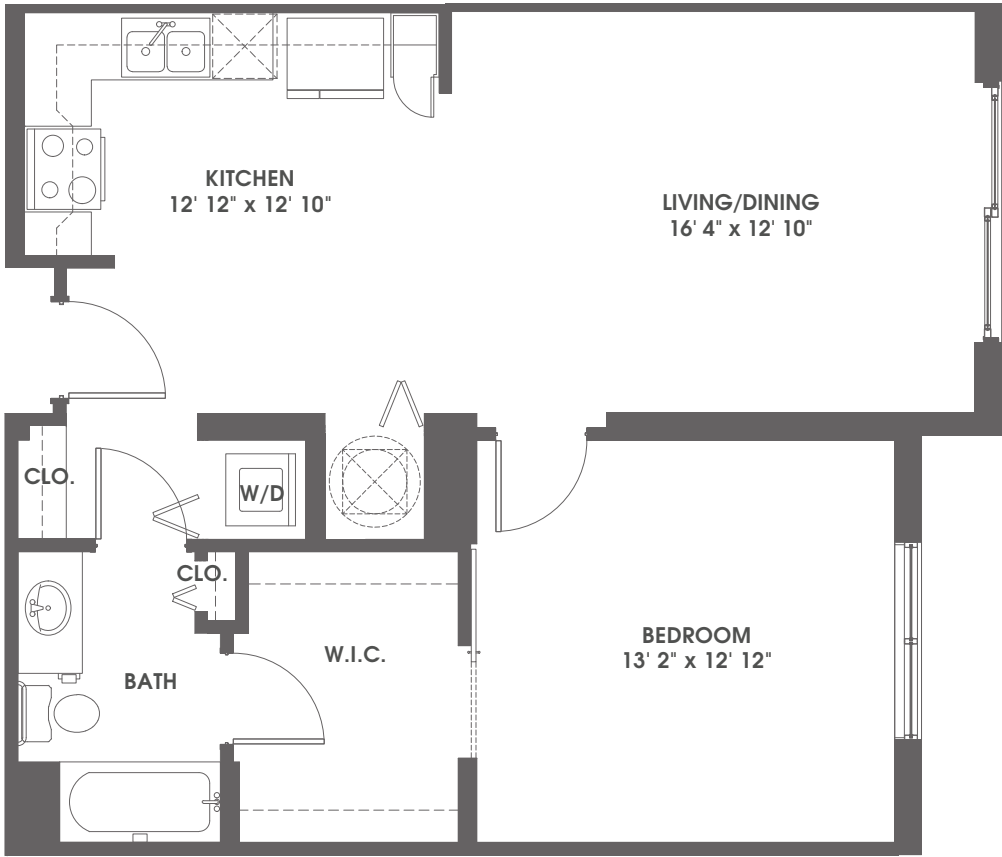
An Avery Collection community by **Meyers Group**



WE ARE AN EQUAL OPPORTUNITY HOUSING PROVIDER. WE DO NOT DISCRIMINATE ON THE BASIS OF RACE, COLOR, NATIONAL ORIGIN, RELIGION, SEX, FAMILIAL STATUS, OR DISABILITY. ALL RENDERINGS AND DESIGNS ARE CONCEPTUAL AND ARE SUBJECT TO CHANGE WITHOUT NOTICE, INCLUDING ALL FEATURES, AMENITIES, SPECIFICATIONS, FLOOR PLANS, COMMON AREAS, AND SQUARE FOOTAGE OF ANY DESIGN OR FEATURE.

Unit A1.2

arden 1 bedroom / 1 bath / 787 sq.ft.

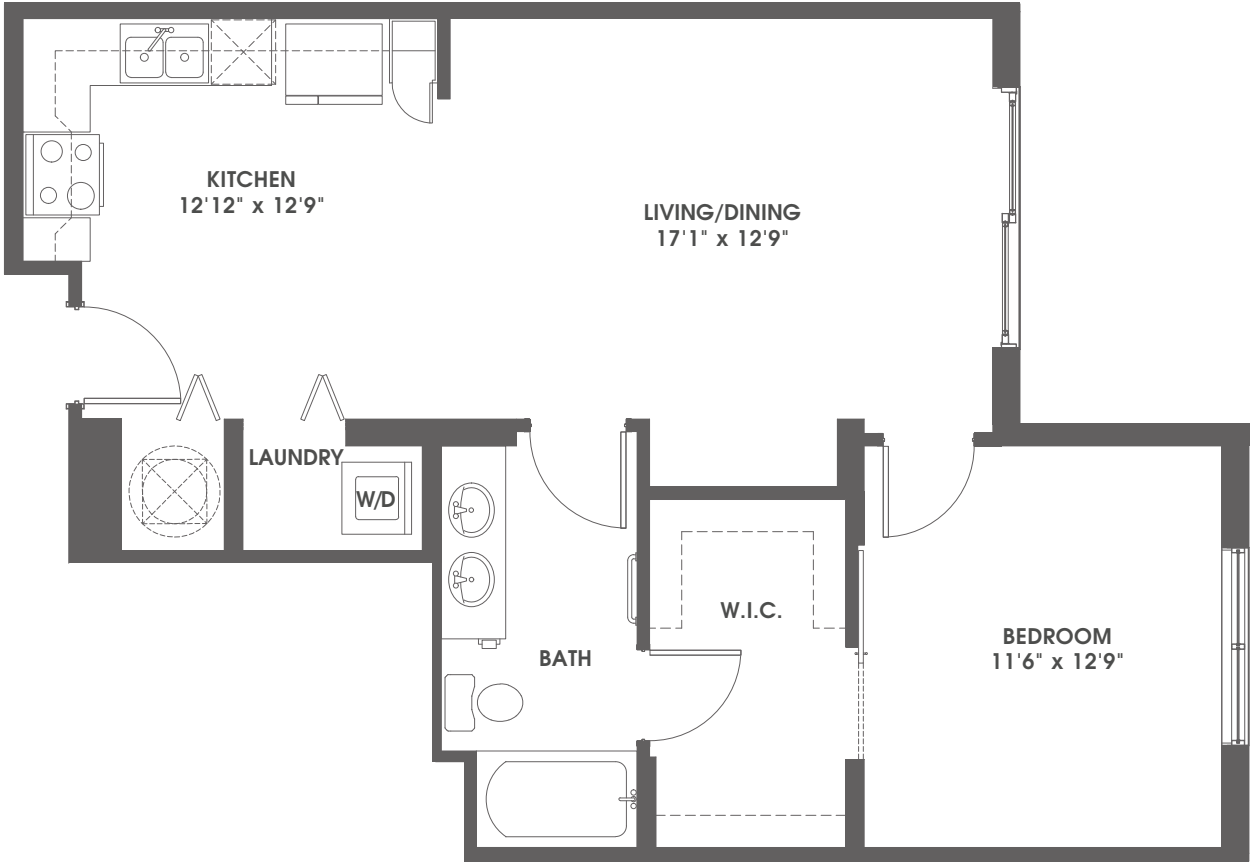


Leasing Office: 896B N. Federal Highway | Pompano Beach, FL 33062 | 800.614.8106 | averypompanobeach.com

An Avery Collection community by **Meyers Group**



WE ARE AN EQUAL OPPORTUNITY HOUSING PROVIDER. WE DO NOT DISCRIMINATE ON THE BASIS OF RACE, COLOR, NATIONAL ORIGIN, RELIGION, SEX, FAMILIAL STATUS, OR DISABILITY. ALL RENDERINGS AND DESIGNS ARE CONCEPTUAL AND ARE SUBJECT TO CHANGE WITHOUT NOTICE, INCLUDING ALL FEATURES, AMENITIES, SPECIFICATIONS, FLOOR PLANS, COMMON AREAS, AND SQUARE FOOTAGE OF ANY DESIGN OR FEATURE. **Unit A1/A1.1**



Leasing Office: 896B N. Federal Highway | Pompano Beach, FL 33062 | 800.614.8106 | averypompanobeach.com

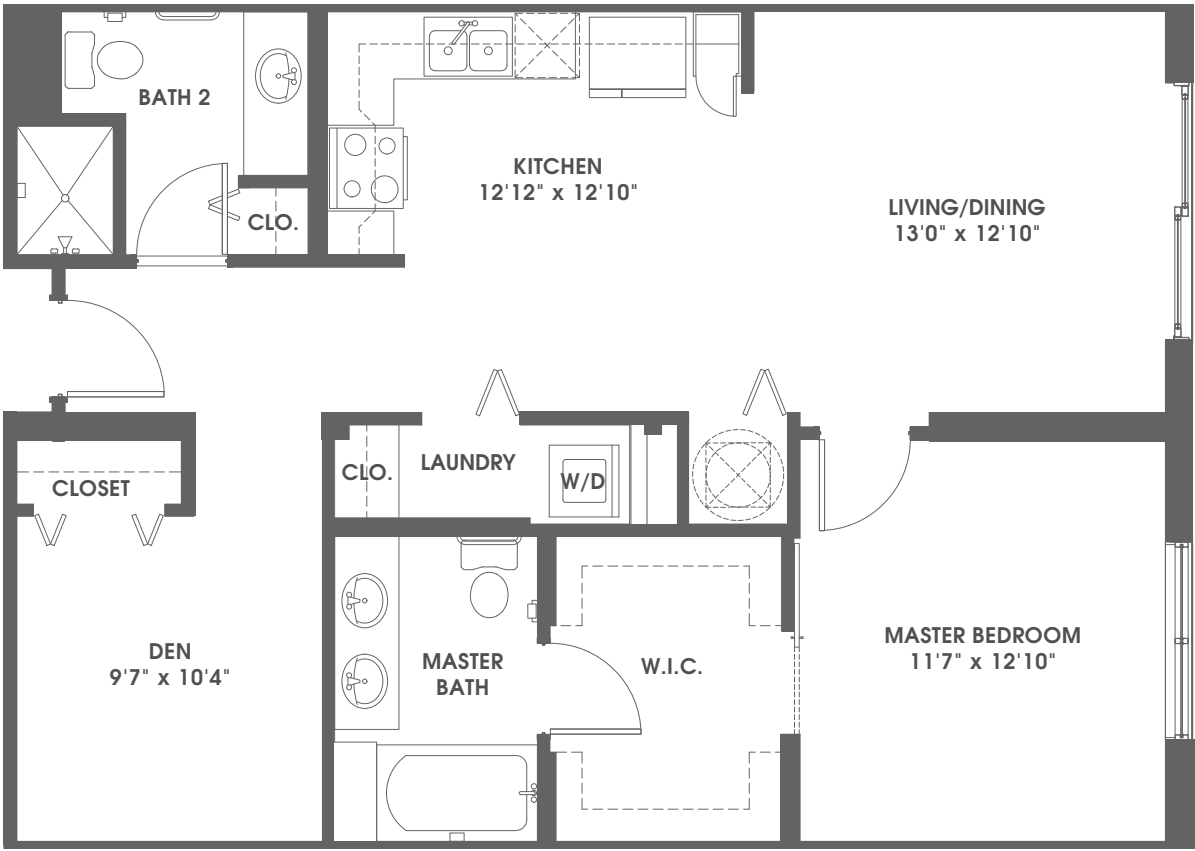
An Avery Collection community by **Meyers Group**



WE ARE AN EQUAL OPPORTUNITY HOUSING PROVIDER. WE DO NOT DISCRIMINATE ON THE BASIS OF RACE, COLOR, NATIONAL ORIGIN, RELIGION, SEX, FAMILIAL STATUS, OR DISABILITY. ALL RENDERINGS AND DESIGNS ARE CONCEPTUAL AND ARE SUBJECT TO CHANGE WITHOUT NOTICE, INCLUDING ALL FEATURES, AMENITIES, SPECIFICATIONS, FLOOR PLANS, COMMON AREAS, AND SQUARE FOOTAGE OF ANY DESIGN OR FEATURE.

Unit A3

austen 1 bedroom / 2 bath / den / 978 sq.ft.



Leasing Office: 896B N. Federal Highway | Pompano Beach, FL 33062 | 800.614.8106 | averypompanobeach.com

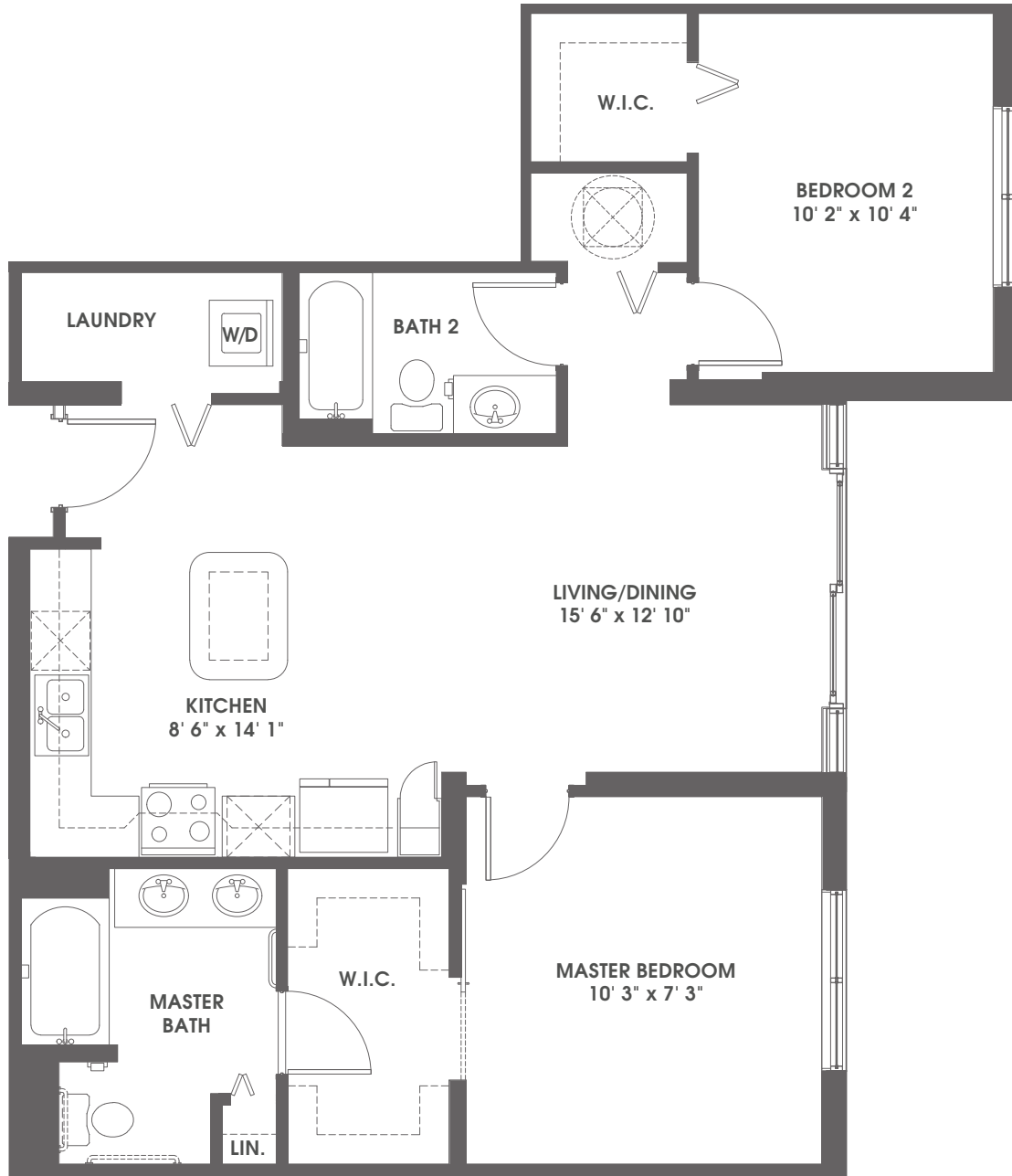
An Avery Collection community by **Meyers Group**



WE ARE AN EQUAL OPPORTUNITY HOUSING PROVIDER. WE DO NOT DISCRIMINATE ON THE BASIS OF RACE, COLOR, NATIONAL ORIGIN, RELIGION, SEX, FAMILIAL STATUS, OR DISABILITY. ALL RENDERINGS AND DESIGNS ARE CONCEPTUAL AND ARE SUBJECT TO CHANGE WITHOUT NOTICE, INCLUDING ALL FEATURES, AMENITIES, SPECIFICATIONS, FLOOR PLANS, COMMON AREAS, AND SQUARE FOOTAGE OF ANY DESIGN OR FEATURE.

Unit A2

bailey 2 bedroom / 2 bath / 1,050 sq.ft.



Leasing Office: 896B N. Federal Highway | Pompano Beach, FL 33062 | 800.614.8106 | averypompanobeach.com

An Avery Collection community by **Meyers Group**

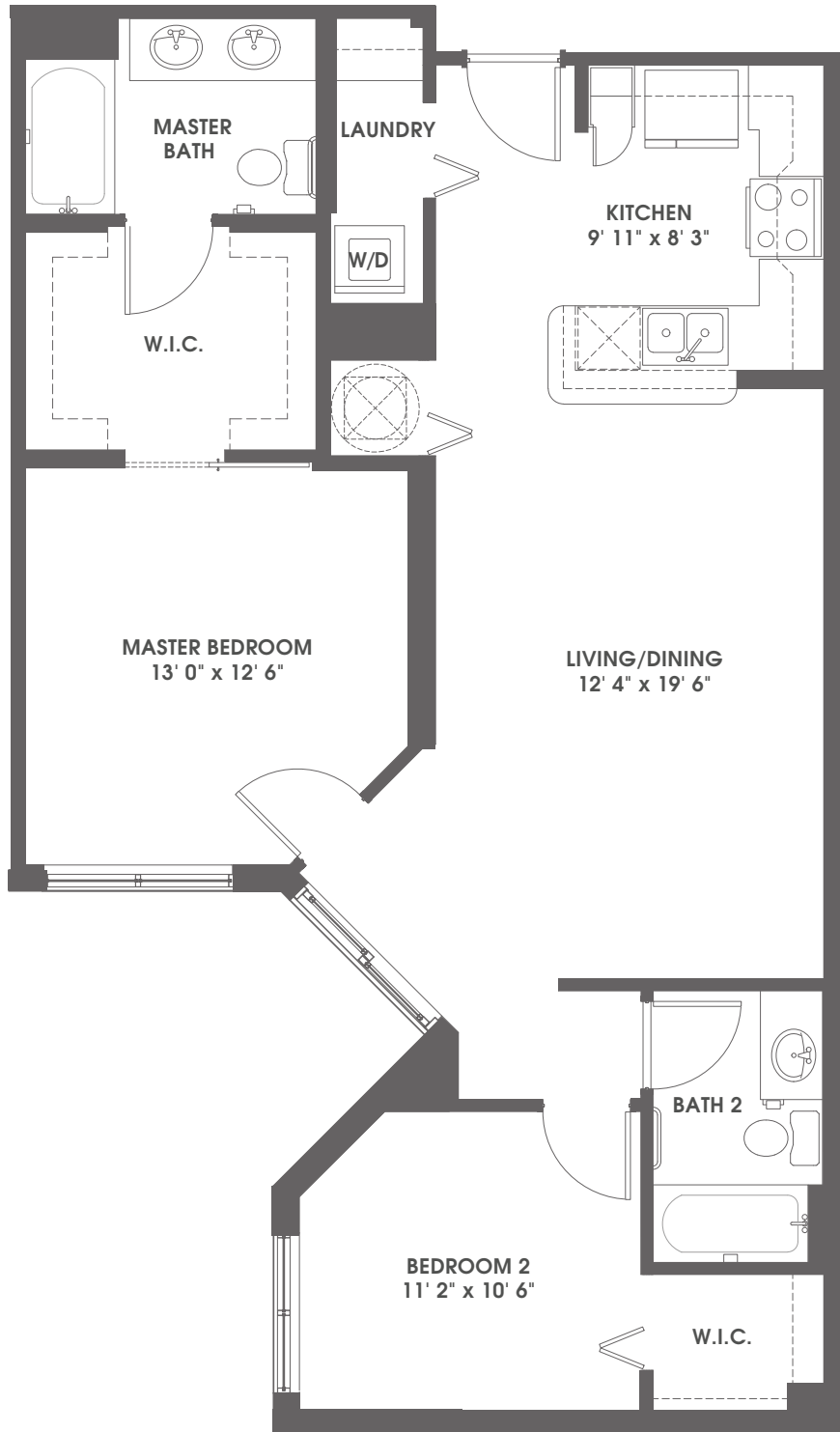


WE ARE AN EQUAL OPPORTUNITY HOUSING PROVIDER. WE DO NOT DISCRIMINATE ON THE BASIS OF RACE, COLOR, NATIONAL ORIGIN, RELIGION, SEX, FAMILIAL STATUS, OR DISABILITY. ALL RENDERINGS AND DESIGNS ARE CONCEPTUAL AND ARE SUBJECT TO CHANGE WITHOUT NOTICE, INCLUDING ALL FEATURES, AMENITIES, SPECIFICATIONS, FLOOR PLANS, COMMON AREAS, AND SQUARE FOOTAGE OF ANY DESIGN OR FEATURE.

Unit B2



barrett 2 bedroom / 2 bath / 1,058 sq.ft.



Leasing Office: 896B N. Federal Highway | Pompano Beach, FL 33062 | 800.614.8106 | averypompanobeach.com

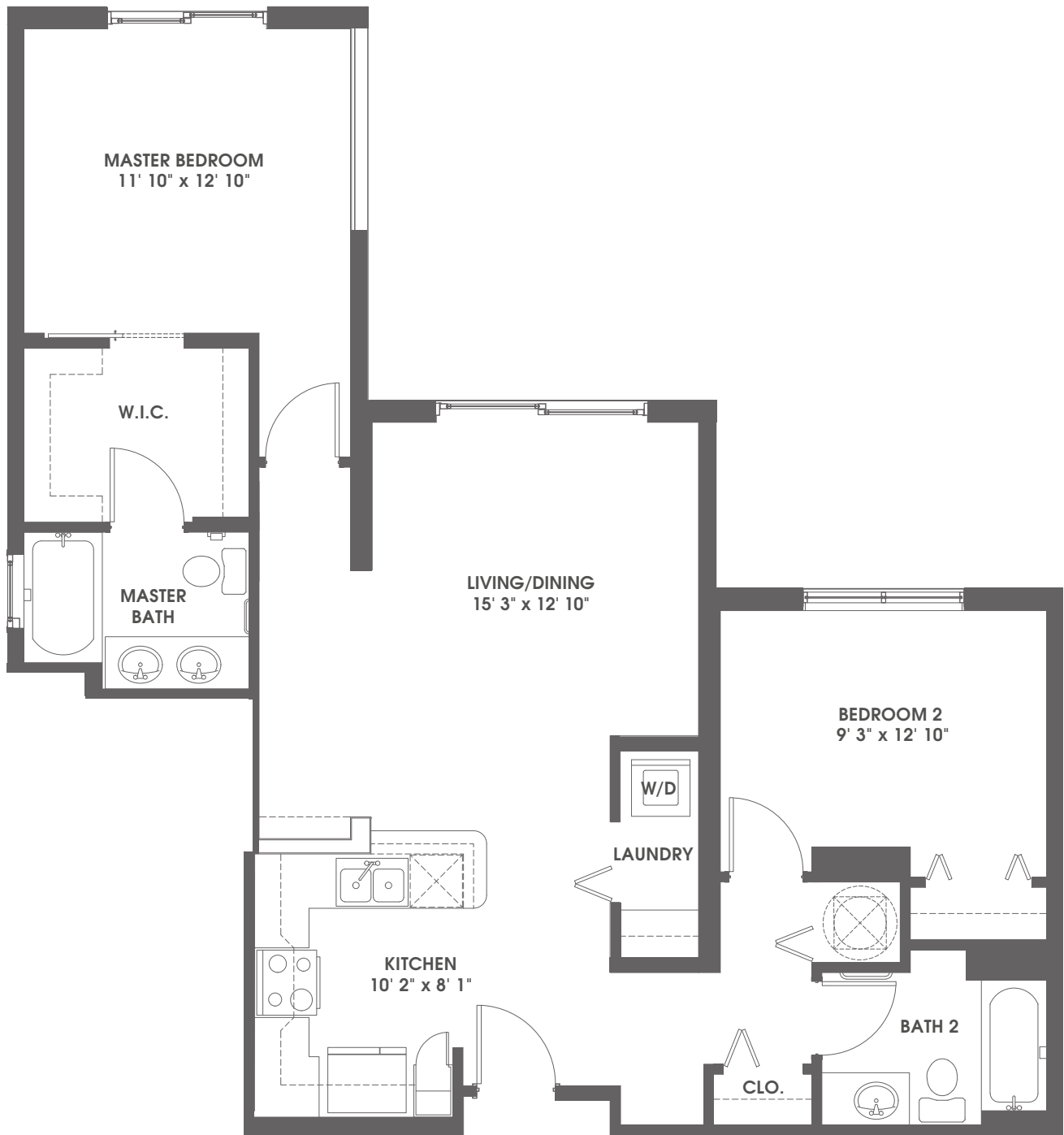
An Avery Collection community by **Meyers Group**



WE ARE AN EQUAL OPPORTUNITY HOUSING PROVIDER. WE DO NOT DISCRIMINATE ON THE BASIS OF RACE, COLOR, NATIONAL ORIGIN, RELIGION, SEX, FAMILIAL STATUS, OR DISABILITY. ALL RENDERINGS AND DESIGNS ARE CONCEPTUAL AND ARE SUBJECT TO CHANGE WITHOUT NOTICE, INCLUDING ALL FEATURES, AMENITIES, SPECIFICATIONS, FLOOR PLANS, COMMON AREAS, AND SQUARE FOOTAGE OF ANY DESIGN OR FEATURE.

Unit B5

blake 2 bedroom / 2 bath / 1,080 sq.ft.



Leasing Office: 896B N. Federal Highway | Pompano Beach, FL 33062 | 800.614.8106 | averypompanobeach.com

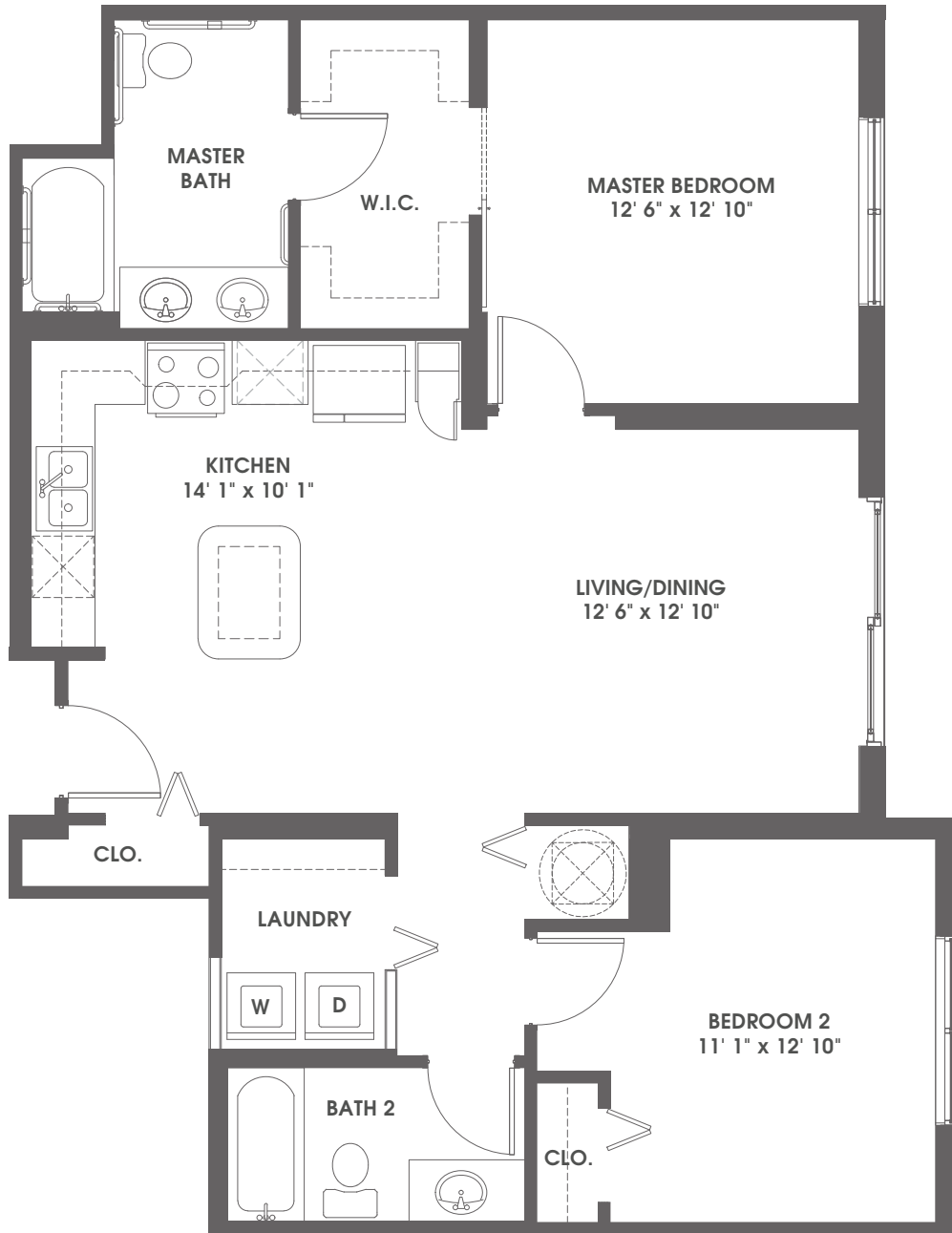
An Avery Collection community by **Meyers Group**



WE ARE AN EQUAL OPPORTUNITY HOUSING PROVIDER. WE DO NOT DISCRIMINATE ON THE BASIS OF RACE, COLOR, NATIONAL ORIGIN, RELIGION, SEX, FAMILIAL STATUS, OR DISABILITY. ALL RENDERINGS AND DESIGNS ARE CONCEPTUAL AND ARE SUBJECT TO CHANGE WITHOUT NOTICE, INCLUDING ALL FEATURES, AMENITIES, SPECIFICATIONS, FLOOR PLANS, COMMON AREAS, AND SQUARE FOOTAGE OF ANY DESIGN OR FEATURE.

Unit B3

braden 2 bedroom / 2 bath / 1,096 sq.ft.



Leasing Office: 896B N. Federal Highway | Pompano Beach, FL 33062 | 800.614.8106 | averypompanobeach.com

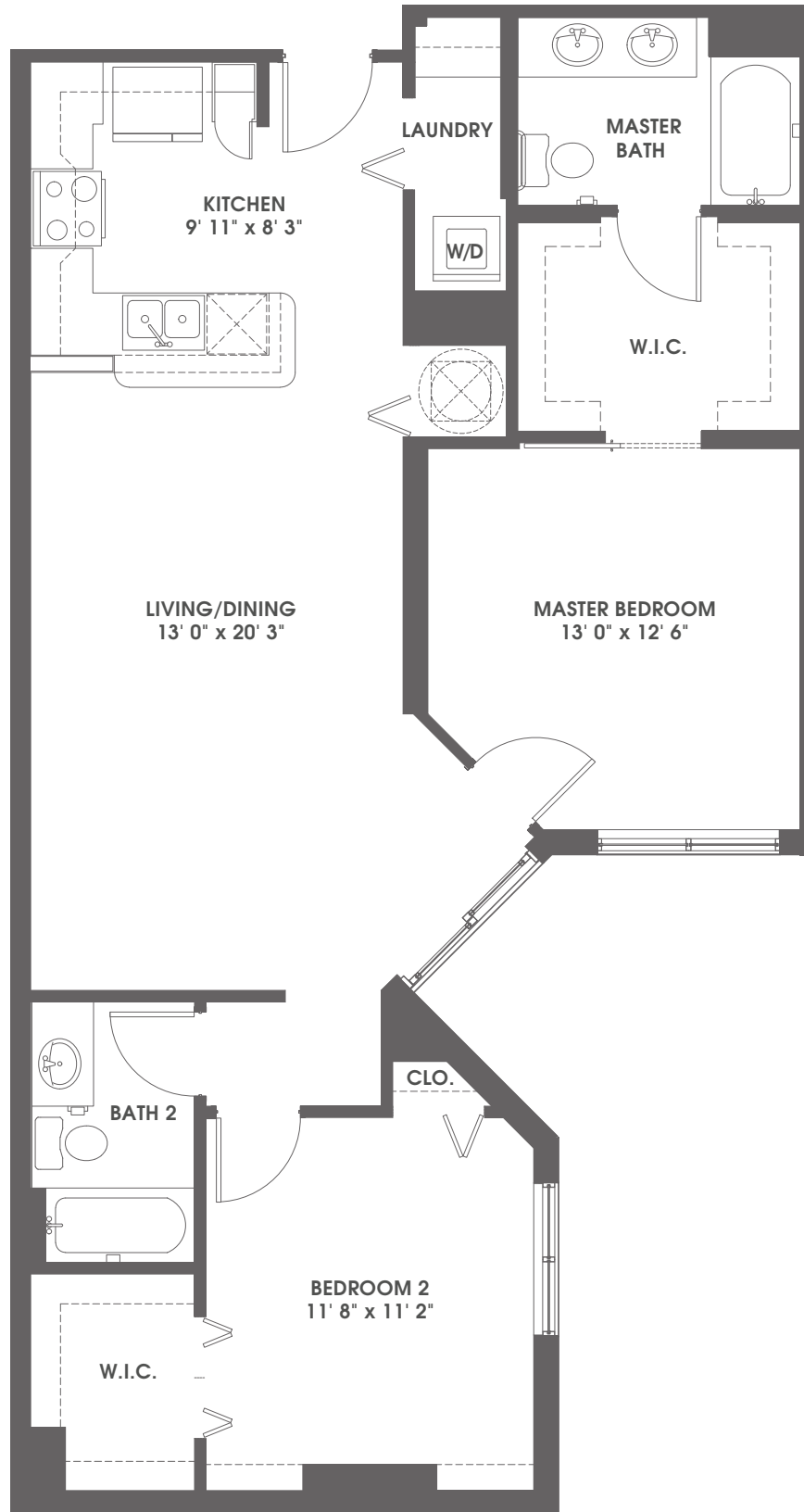
An Avery Collection community by **Meyers Group**



WE ARE AN EQUAL OPPORTUNITY HOUSING PROVIDER. WE DO NOT DISCRIMINATE ON THE BASIS OF RACE, COLOR, NATIONAL ORIGIN, RELIGION, SEX, FAMILIAL STATUS, OR DISABILITY. ALL RENDERINGS AND DESIGNS ARE CONCEPTUAL AND ARE SUBJECT TO CHANGE WITHOUT NOTICE, INCLUDING ALL FEATURES, AMENITIES, SPECIFICATIONS, FLOOR PLANS, COMMON AREAS, AND SQUARE FOOTAGE OF ANY DESIGN OR FEATURE.

Unit B1.1

brett 2 bedroom / 2 bath / 1,139 sq.ft.



Leasing Office: 896B N. Federal Highway | Pompano Beach, FL 33062 | 800.614.8106 | averypompanobeach.com

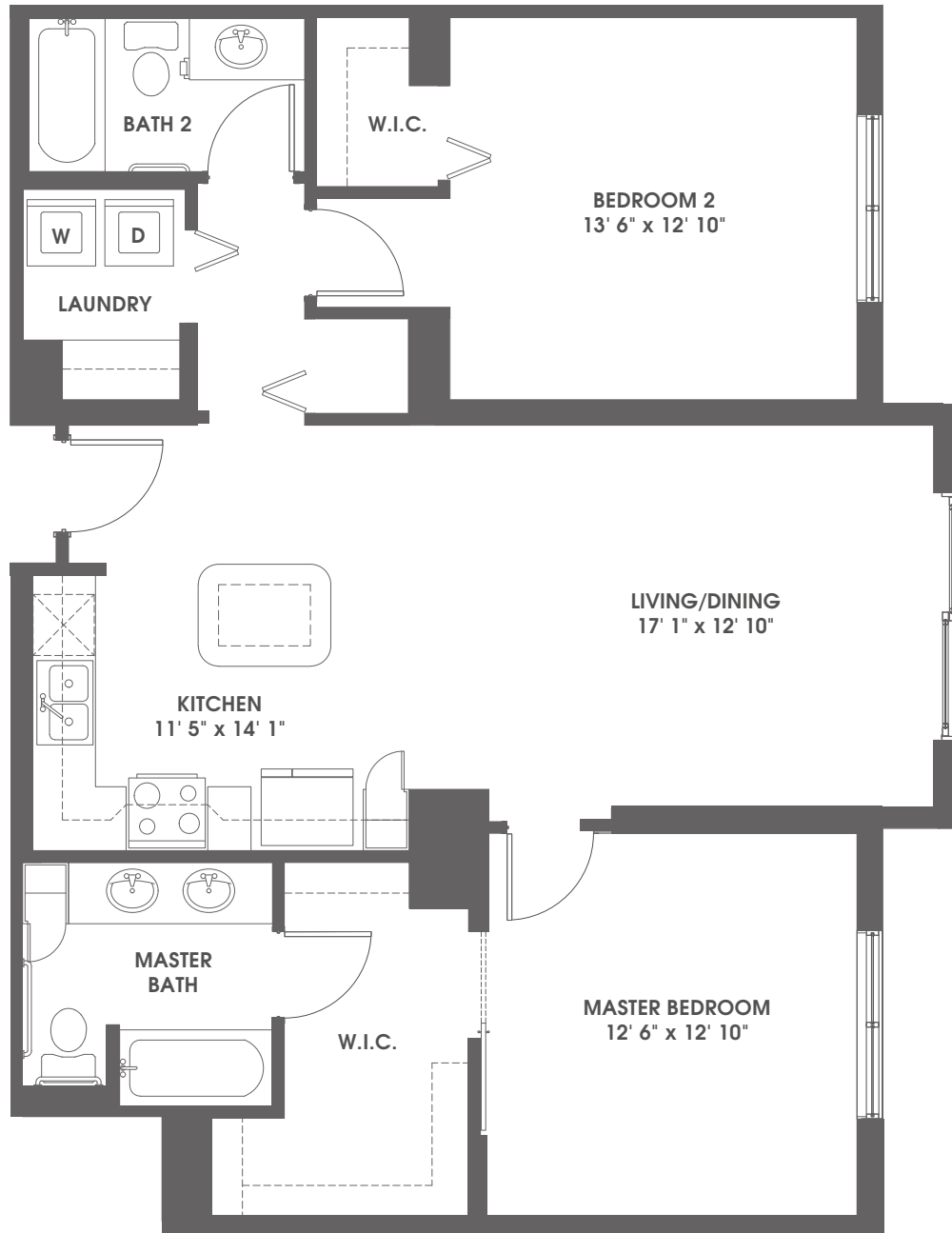
An Avery Collection community by **Meyers Group**



WE ARE AN EQUAL OPPORTUNITY HOUSING PROVIDER. WE DO NOT DISCRIMINATE ON THE BASIS OF RACE, COLOR, NATIONAL ORIGIN, RELIGION, SEX, FAMILIAL STATUS, OR DISABILITY. ALL RENDERINGS AND DESIGNS ARE CONCEPTUAL AND ARE SUBJECT TO CHANGE WITHOUT NOTICE, INCLUDING ALL FEATURES, AMENITIES, SPECIFICATIONS, FLOOR PLANS, COMMON AREAS, AND SQUARE FOOTAGE OF ANY DESIGN OR FEATURE.

Unit B5.1





Leasing Office: 896B N. Federal Highway | Pompano Beach, FL 33062 | 800.614.8106 | averypompanobeach.com

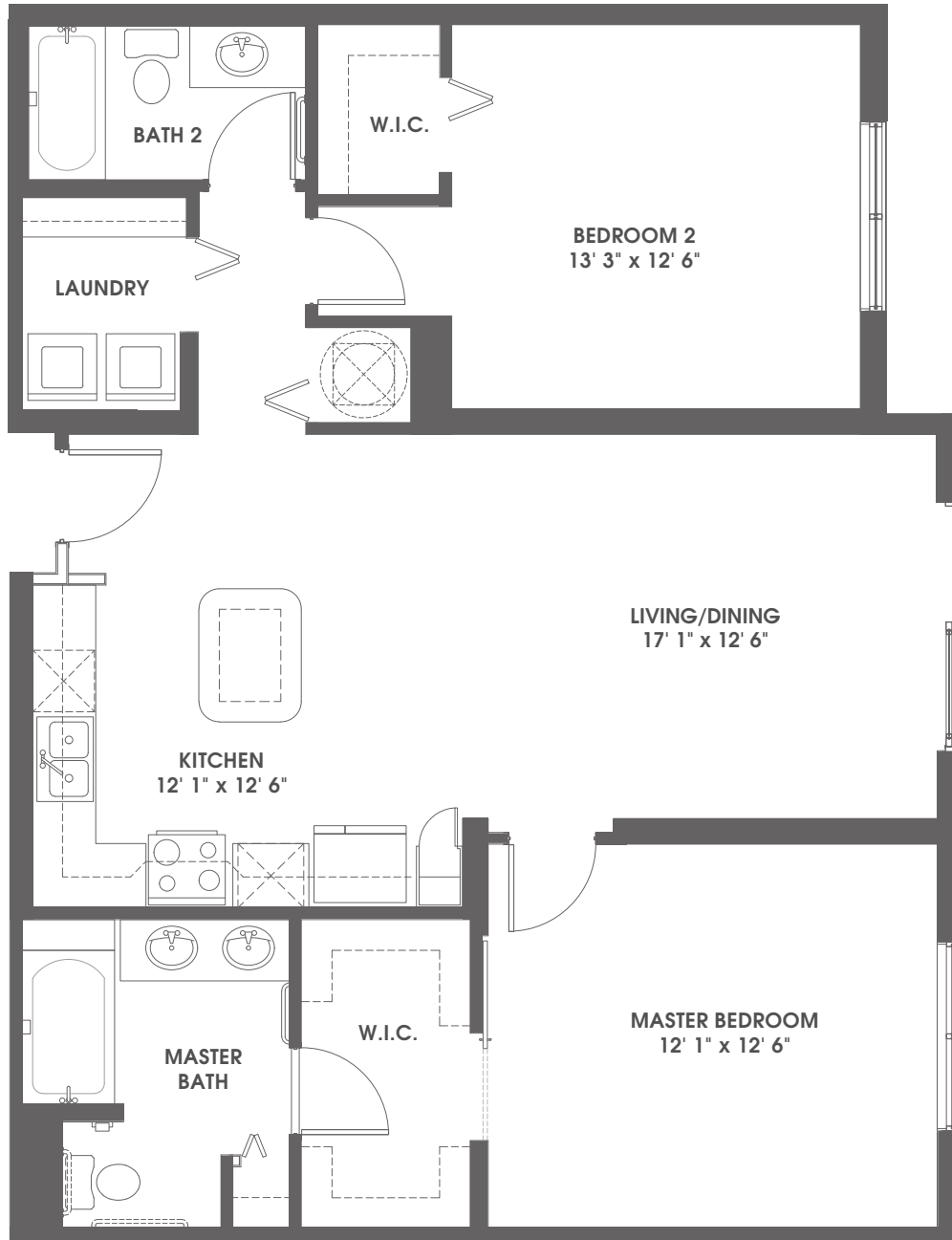
An Avery Collection community by **Meyers Group**



WE ARE AN EQUAL OPPORTUNITY HOUSING PROVIDER. WE DO NOT DISCRIMINATE ON THE BASIS OF RACE, COLOR, NATIONAL ORIGIN, RELIGION, SEX, FAMILIAL STATUS, OR DISABILITY. ALL RENDERINGS AND DESIGNS ARE CONCEPTUAL AND ARE SUBJECT TO CHANGE WITHOUT NOTICE, INCLUDING ALL FEATURES, AMENITIES, SPECIFICATIONS, FLOOR PLANS, COMMON AREAS, AND SQUARE FOOTAGE OF ANY DESIGN OR FEATURE.

Unit B1.2

brooke 2 bedroom / 2 bath / 1,201 sq.ft.



Leasing Office: 896B N. Federal Highway | Pompano Beach, FL 33062 | 800.614.8106 | averypompanobeach.com

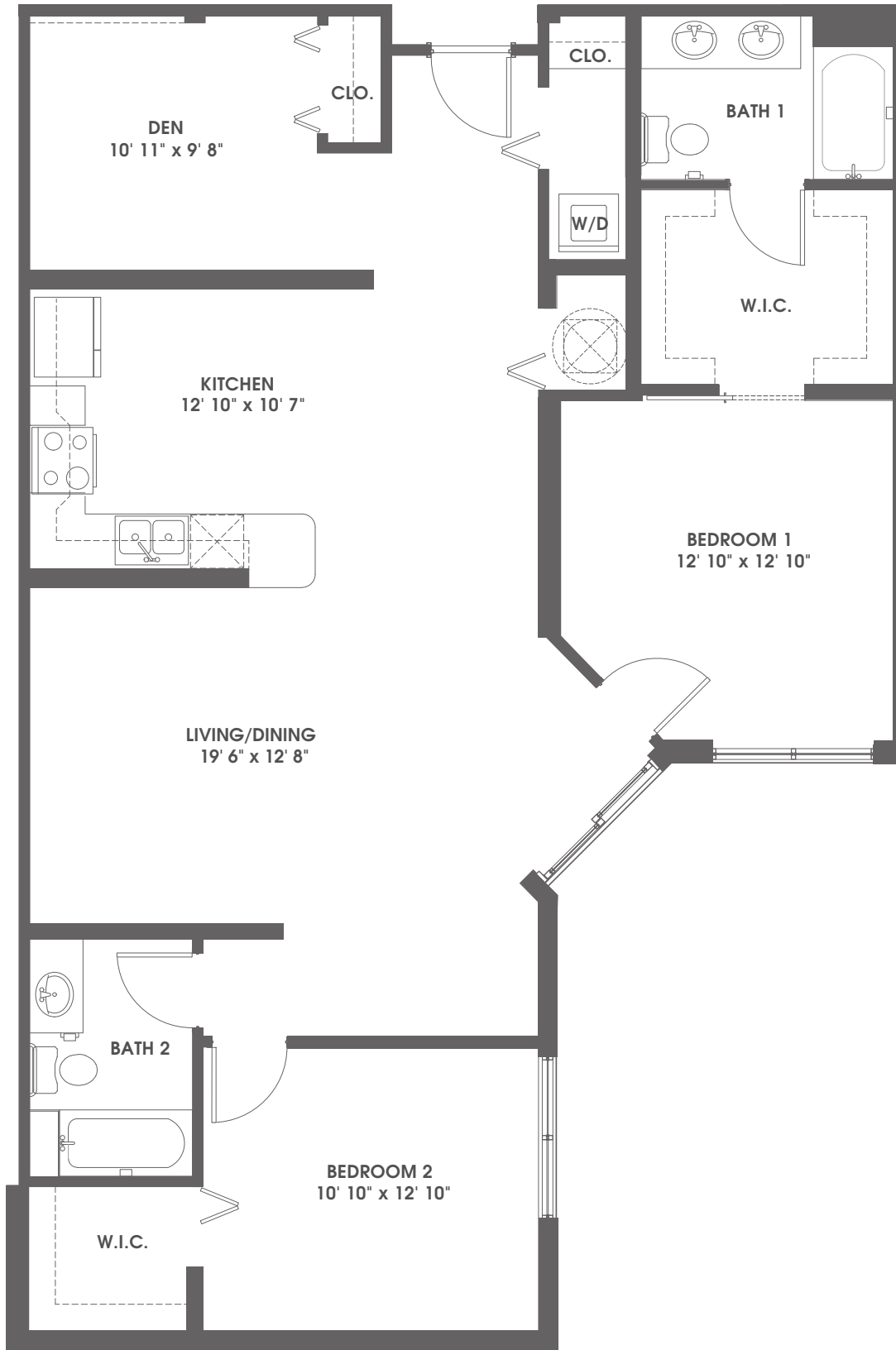
An Avery Collection community by **Meyers Group**



WE ARE AN EQUAL OPPORTUNITY HOUSING PROVIDER. WE DO NOT DISCRIMINATE ON THE BASIS OF RACE, COLOR, NATIONAL ORIGIN, RELIGION, SEX, FAMILIAL STATUS, OR DISABILITY. ALL RENDERINGS AND DESIGNS ARE CONCEPTUAL AND ARE SUBJECT TO CHANGE WITHOUT NOTICE, INCLUDING ALL FEATURES, AMENITIES, SPECIFICATIONS, FLOOR PLANS, COMMON AREAS, AND SQUARE FOOTAGE OF ANY DESIGN OR FEATURE.

Unit B1

bryce 2 bedroom / 2 bath / den / 1,404 sq.ft.



Leasing Office: 896B N. Federal Highway | Pompano Beach, FL 33062 | 800.614.8106 | averypompanobeach.com



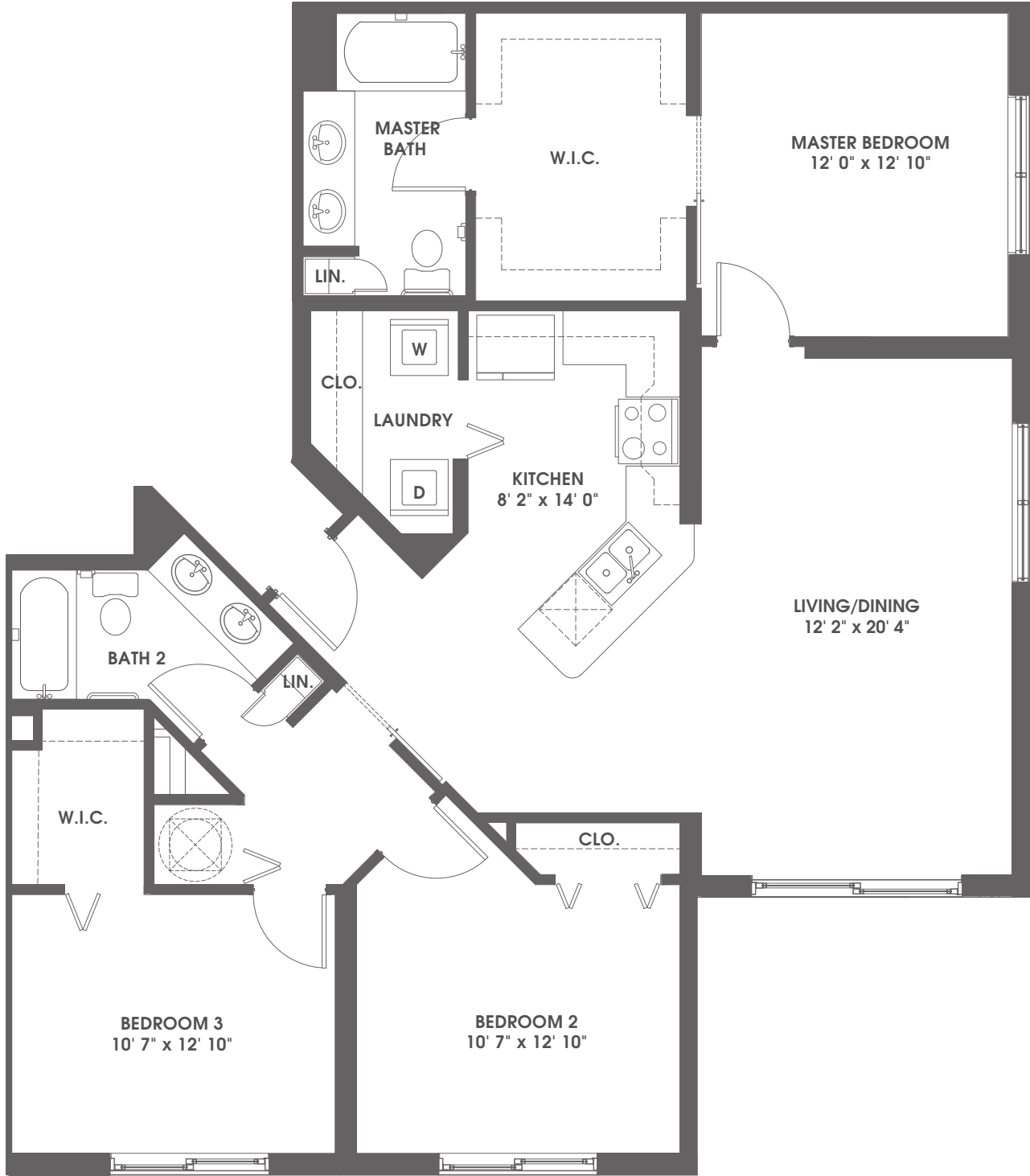
An Avery Collection community by **Meyers Group**



WE ARE AN EQUAL OPPORTUNITY HOUSING PROVIDER. WE DO NOT DISCRIMINATE ON THE BASIS OF RACE, COLOR, NATIONAL ORIGIN, RELIGION, SEX, FAMILIAL STATUS, OR DISABILITY. ALL RENDERINGS AND DESIGNS ARE CONCEPTUAL AND ARE SUBJECT TO CHANGE WITHOUT NOTICE, INCLUDING ALL FEATURES, AMENITIES, SPECIFICATIONS, FLOOR PLANS, COMMON AREAS, AND SQUARE FOOTAGE OF ANY DESIGN OR FEATURE.

Unit B6

courtney 3 bedroom / 2 bath / 1,436 sq.ft.



Leasing Office: 896B N. Federal Highway | Pompano Beach, FL 33062 | 800.614.8106 | averypompanobeach.com

An Avery Collection community by **Meyers Group**



WE ARE AN EQUAL OPPORTUNITY HOUSING PROVIDER. WE DO NOT DISCRIMINATE ON THE BASIS OF RACE, COLOR, NATIONAL ORIGIN, RELIGION, SEX, FAMILIAL STATUS, OR DISABILITY. ALL RENDERINGS AND DESIGNS ARE CONCEPTUAL AND ARE SUBJECT TO CHANGE WITHOUT NOTICE, INCLUDING ALL FEATURES, AMENITIES, SPECIFICATIONS, FLOOR PLANS, COMMON AREAS, AND SQUARE FOOTAGE OF ANY DESIGN OR FEATURE.

Unit C1